

# 720 METALLIC TREE LN.

Van Alstyne, TX - Tinsley Meadows  
BAKER E



# \$486,900

## PROPERTY FEATURES

- Dining Room
- 3 Bedrooms
- 2 Bathrooms
- Study
- 2-Car Garage
- 2,200 Sq Ft
- 1 Story

**CONTACT US**

[tinsleymeadows@cambridgehomes.com](mailto:tinsleymeadows@cambridgehomes.com)

469-782-9190

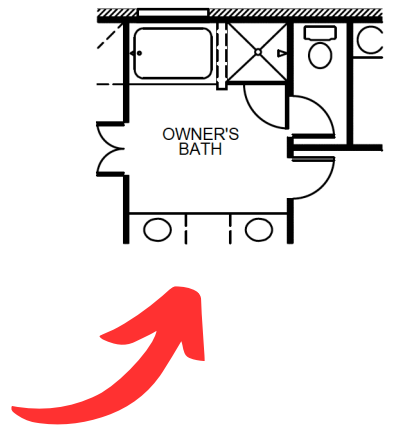
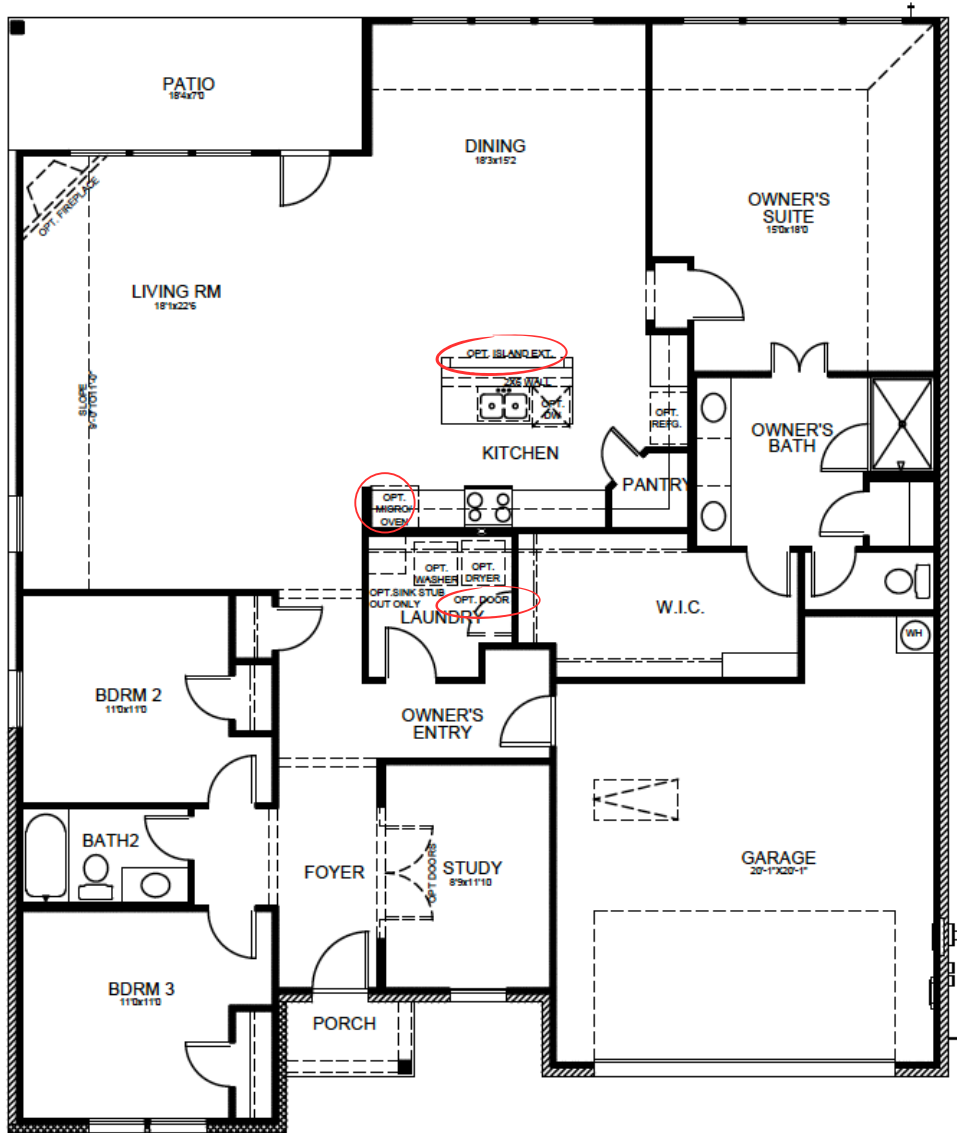
**MODEL HOME: 722 Tinsley Meadows Dr. Van Alstyne, TX 75495**

Cambridge Homes. 2600 Network Blvd Ste. 150, Frisco, Texas 75034. These depictions represent an artist's concept of the product and are not intended to be an exact representation and are not intended to show specific detailing. The company may change home design, price, materials, features and methods of construction without prior notice. Square footage are estimate only. Copyright © 2024 Cambridge Homes Holdings, LLC. All rights reserved.

PLAN EFFECTIVE DATE: 10.31.23 - SALES EFFECTIVE DATE 4.19.24



# MAIN FLOOR



## OPTIONS/UPGRADES

- Package 4 w/ Opt. Wood ilo Carpet in Living Areas
- Exterior Color Package #9
- Garage Door Opener



Cambridge Homes, 2600 Network Blvd Ste. 150, Frisco, Texas 75034. These depictions represent an artist's concept of the product and are not intended to be an exact representation and are not intended to show specific detailing. The company may change home design, price, materials, features and methods of construction without prior notice. Square footage are estimate only. Copyright © 2024 Cambridge Homes Holdings, LLC. All rights reserved.

PLAN EFFECTIVE DATE: 10.31.23 - SALES EFFECTIVE DATE 4.19.24

