

# 710 TINSLEY MEADOWS DR.

Van Alstyne, TX - Tinsley Meadows  
HEATHBROOK F



## INTERIOR OPTIONS/UPGRADES

- Package 3 - w/ Opt. Wood ilo Carpet in Living Areas
- 4 LED Disc in Living Room & Game Room
- Garage Coach Light Prewire
- 2nd Sink in Owner's Bath
- Garage Door Opener
- Stainless Steel Appliance Package
- Low Voltage Package
- Kitchen Island Extension

## PROPERTY FEATURES

- 2,274 Sq Ft
- 4 Bedrooms
- 2 Story
- 3 Bathrooms
- Loft
- 2-Car Garage
- Owners Suite on First Floor

## CONTACT US

[tinsleymeadows@cambridgehomes.com](mailto:tinsleymeadows@cambridgehomes.com)

469-782-9190

**MODEL HOME:** 722 Tinsley Meadows Dr. Van Alstyne, TX 75495

Cambridge Homes. 2600 Network Blvd Ste. 150, Frisco, Texas 75034. These depictions represent an artist's concept of the product and are not intended to be an exact representation and are not intended to show specific detailing. The company may change home design, price, materials, features and methods of construction without prior notice. Square footage are estimate only. Copyright © 2024 Cambridge Homes Holdings, LLC. All rights reserved.

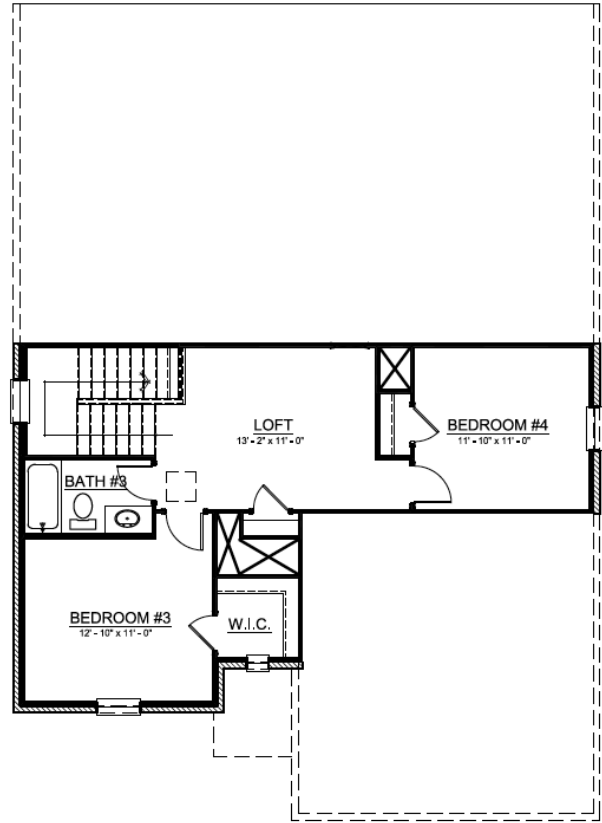
**PLAN EFFECTIVE DATE 3.27.23 - SALES EFFECTIVE DATE 6.18.24**



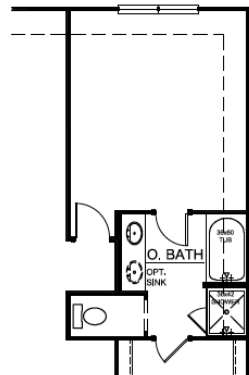
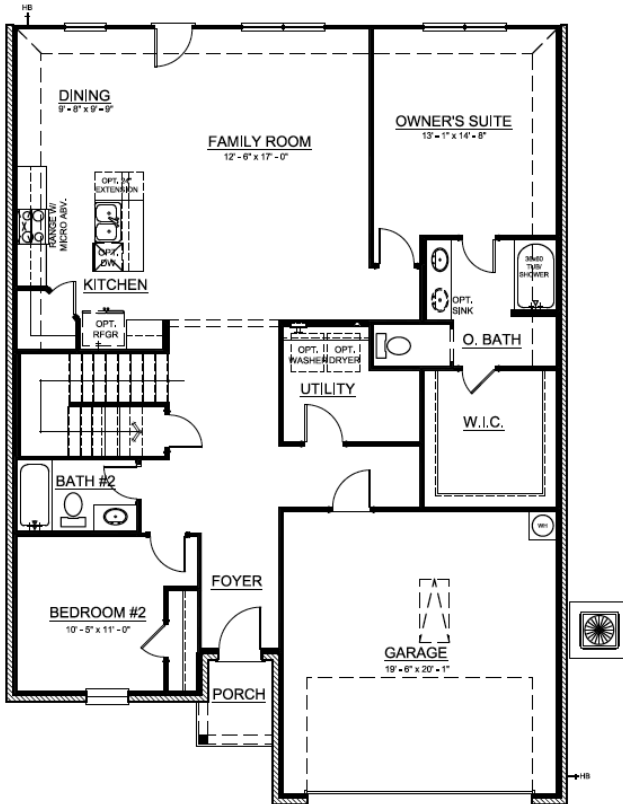
SCAN FOR PRICING



# UPPER FLOOR



# MAIN FLOOR



Cambridge Homes. 2600 Network Blvd Ste. 150, Frisco, Texas 75034. These depictions represent an artist's concept of the product and are not intended to be an exact representation and are not intended to show specific detailing. The company may change home design, price, materials, features and methods of construction without prior notice. Square footage are estimate only. Copyright © 2024 Cambridge Homes Holdings, LLC. All rights reserved.

PLAN EFFECTIVE DATE 3.27.23 - SALES EFFECTIVE DATE 6.18.24

