

614 METALLIC TREE LN.

Van Alstyne, TX - Tinsley Meadows
BAKER F



INTERIOR OPTIONS/UPGRADES

- Package 3 w/ Upg. Wood ilo Carpet in Living Areas
- 8 Ft Doors
- Garage Door Opener
- Kitchen Island Extension
- Study

PROPERTY FEATURES

- 2,200 Sq Ft
- 3 Bedrooms
- 1 Story
- 2 Bathrooms
- 2-Car Garage
- Owners Suite on First Floor

CONTACT US

tinsleymeadows@cambridgehomes.com

469-782-9190

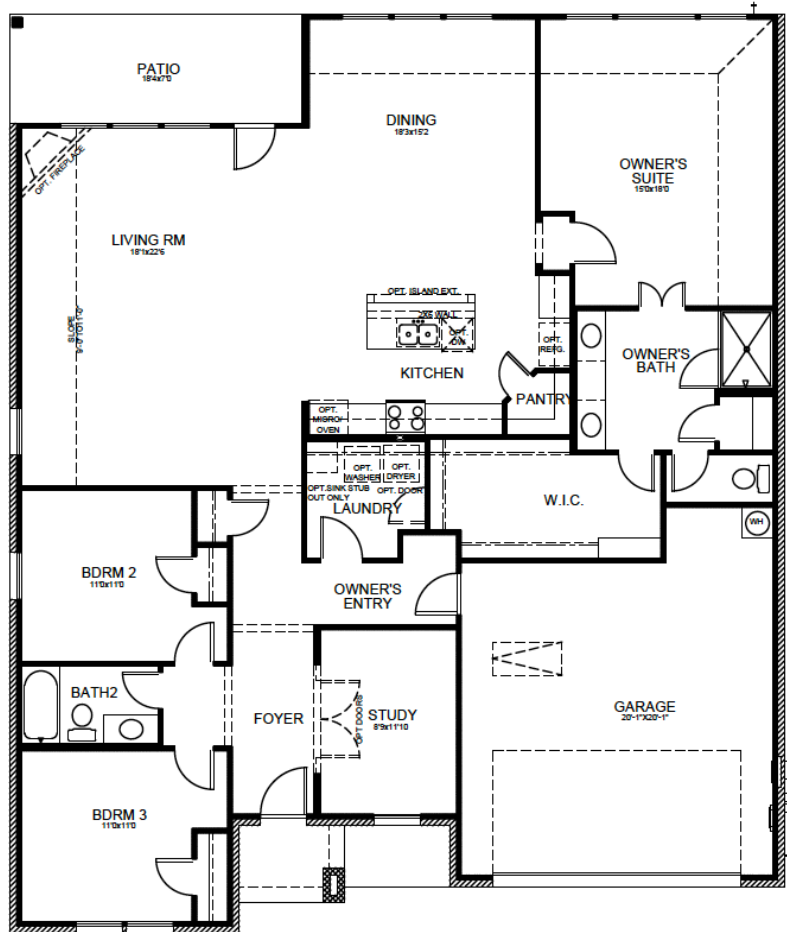
MODEL HOME: 722 Tinsley Meadows Dr. Van Alstyne, TX 75495

Cambridge Homes, 2600 Network Blvd Ste. 150, Frisco, Texas 75034. These depictions represent an artist's concept of the product and are not intended to be an exact representation and are not intended to show specific detailing. The company may change home design, price, materials, features and methods of construction without prior notice. Square footage are estimate only. Copyright © 2024 Cambridge Homes Holdings, LLC. All rights reserved.

PLAN EFFECTIVE DATE 3.27.23 - SALES EFFECTIVE DATE 6.18.24



MAIN FLOOR



SCAN FOR PRICING



Cambridge Homes, 2600 Network Blvd Ste. 150, Frisco, Texas 75034. These depictions represent an artist's concept of the product and are not intended to be an exact representation and are not intended to show specific detailing. The company may change home design, price, materials, features and methods of construction without prior notice. Square footage are estimate only. Copyright © 2024 Cambridge Homes Holdings, LLC. All rights reserved.

PLAN EFFECTIVE DATE 3.27.23 - SALES EFFECTIVE DATE 6.18.24

