

# 1435 GOLDEN MEADOW DR.

Van Alstyne, TX - Tinsley Meadows  
Camden F



## INTERIOR OPTIONS/UPGRADES

- Package 3 w/ Upg. Wood ilo Carpet in Living Areas
- Garage Door Opener
- Kitchen Island Extension

## PROPERTY FEATURES

- 2,332 Sq Ft
- 4 Bedrooms
- 1 Story
- 3 Bathrooms
- 3-Car Garage
- Owners Suite on First Floor

## CONTACT US

[tinsleymeadows@cambridgehomes.com](mailto:tinsleymeadows@cambridgehomes.com)

469-782-9190

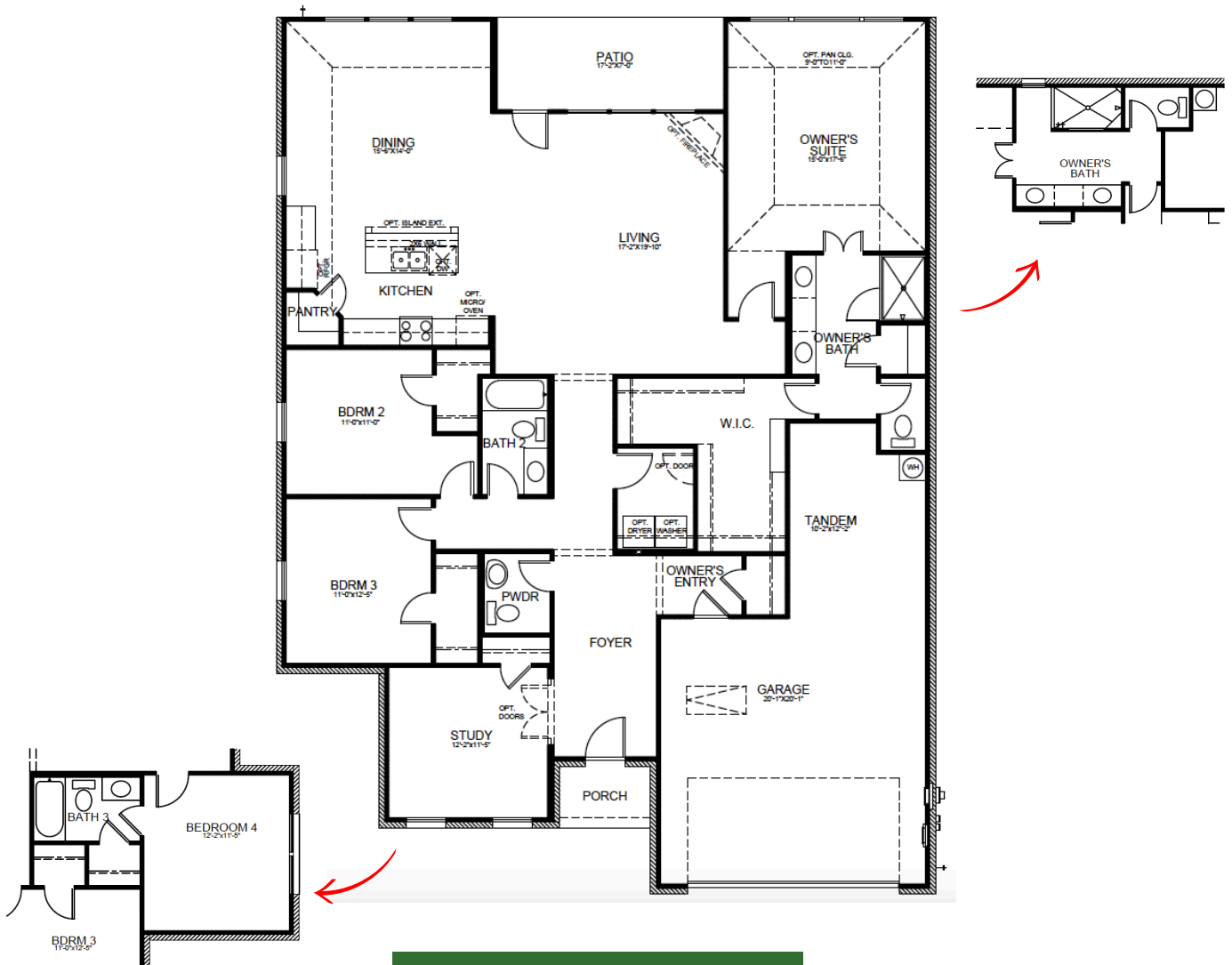
**MODEL HOME:** 722 Tinsley Meadows Dr. Van Alstyne, TX 75495

Cambridge Homes, 2600 Network Blvd Ste. 150, Frisco, Texas 75034. These depictions represent an artist's concept of the product and are not intended to be an exact representation and are not intended to show specific detailing. The company may change home design, price, materials, features and methods of construction without prior notice. Square footage are estimate only. Copyright © 2024 Cambridge Homes Holdings, LLC. All rights reserved.

**PLAN EFFECTIVE DATE 3.27.23 - SALES EFFECTIVE DATE 6.21.24**



# MAIN FLOOR



SCAN FOR PRICING



Cambridge Homes. 2600 Network Blvd Ste. 150, Frisco, Texas 75034. These depictions represent an artist's concept of the product and are not intended to be an exact representation and are not intended to show specific detailing. The company may change home design, price, materials, features and methods of construction without prior notice. Square footage are estimate only. Copyright © 2024 Cambridge Homes Holdings, LLC. All rights reserved.

PLAN EFFECTIVE DATE 3.27.23 - SALES EFFECTIVE DATE 6.21.24

