

528 HICKORY RIDGE DR.



Van Alstyne, TX - Rolling Ridge
ELLERDALE - D

4.99%
INTEREST
RATE*

PROPERTY FEATURES

- 2 Story
- 2-Car Garage
- Dining Room
- 2,908 Sq. Ft
- 5 Bedrooms
- 3 Bathrooms



\$452,020

CONTACT US

rollingridge@cambridgehomes.com

469-782-9190

MODEL HOME: 508 Hickory Ridge Dr. Van Alstyne, TX 75495

© 2024 CMG Financial, all rights reserved. CMG Financial is a registered trade name of CMG Mortgage Inc., NMLS #1820 in most, but not all states. CMG Mortgage, Inc. is an equal opportunity lender. Registered Mortgage Banker with the Texas Department of Savings and Mortgage Lending. To verify our complete list of state licenses, please visit www.cmgfi.com/corporate/licensing and www.nmlsconsumeraccess.org. All loans subject to credit approval and only eligible with CMG Financial, Cambridge Homes Preferred Lender. This incentive only valid on select spec homes that are contracted on or after 2/23/24 and close during the limited time frame in which the incentive is offered, while funds last, and finance with CMG Financial. The rates shown above are for educational purposes only, not a commitment to lend, please contact LO to see your qualified rate. Rate may change or may not be available at time of rate lock. If the down payment is less than 20%, mortgage insurance may be required, which could increase the monthly payment and the APR. Estimated monthly payment does not include amounts for taxes and insurance premiums. Adjustable-rate loans and rates are subject to change during the loan term. That change can increase or decrease your monthly payment. The rates shown above are the current rates for the purchase of a single-family primary residence based on a 45 day lock period, 740 credit score and 80% LTV. These rates are not guaranteed and are subject to change. This is not a credit decision or a commitment to lend. Your rate will depend on various factors including loan product, loan size, credit profile, property value, geographic location, occupancy and other factors. Offer is for a limited time only and can be stopped at any time and with no prior notice.

*Rate as of 2/22/24. 10/6 ARM. Stated rate may change or may not be available at time of rate lock. Purchase Price \$400,000, 20% Down Payment, \$320,000 Loan Amount, 30 year term, initial interest rate 4.99% (6.228% APR) for initial 120 payments of \$1,716, not including mortgage insurance/taxes/insurance.
Post Introductory Period Example: Interest Rate = SOFR + Margin. Payment can adjust every 6 months. Sample Repayments at month 120 with balance of \$260,216: 3% Margin, 5.32% SOFR (2/22/24), 8.375% variable rate, \$2,238 monthly payment. At max interest rate of 9.99% payment is \$2,509.

Cambridge Homes, 2600 Network Blvd Ste. 150, Frisco, Texas 75034. These depictions represent an artist's concept of the product and are not intended to be an exact representation and are not intended to show specific detailing. The company may change home design, price, materials, features and methods of construction without prior notice. Square footage are estimate only. Copyright © 2024 Cambridge Homes Holdings, LLC. All rights reserved.

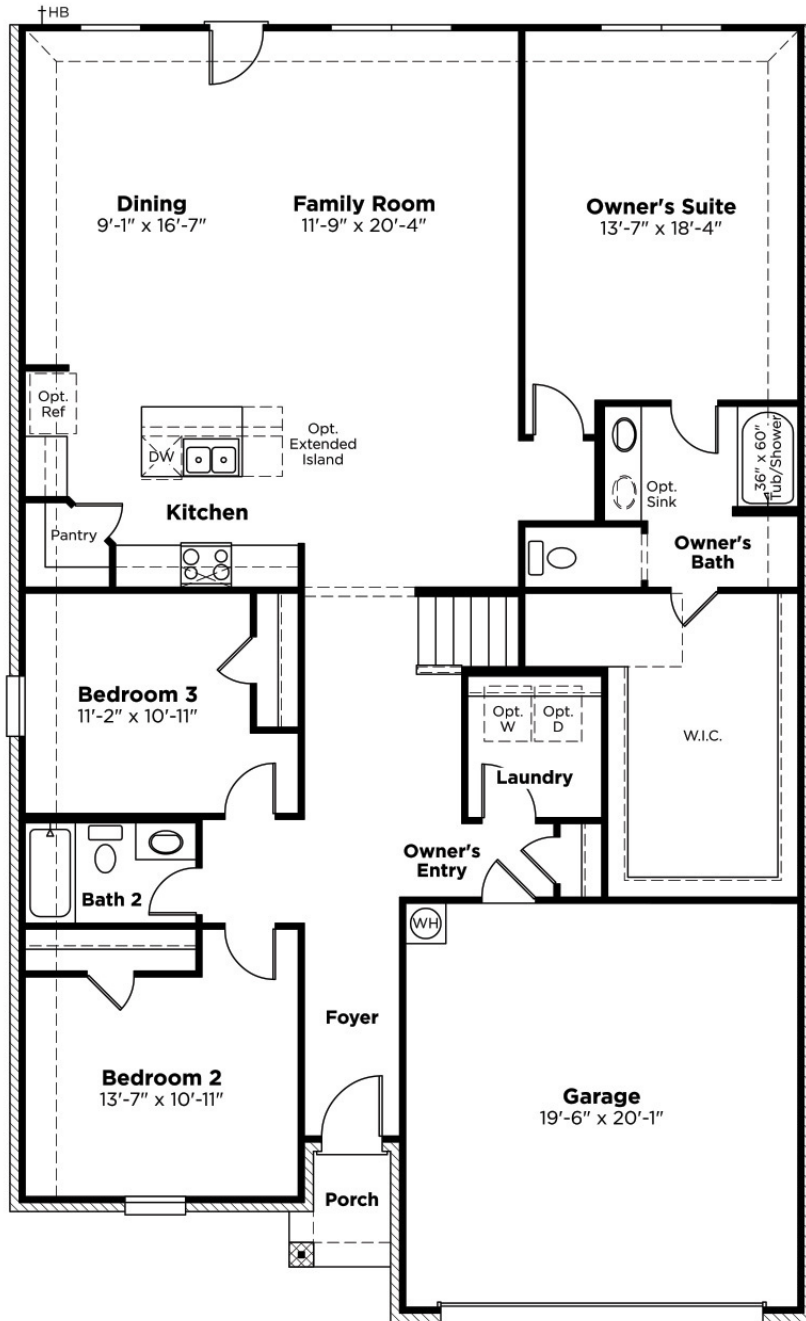
PLAN EFFECTIVE DATE 4.14.23 - SALES EFFECTIVE DATE 2.26.24



MAIN FLOOR

INTERIOR SELECTIONS/UPGRADES

- Package 4 w/ Opt. Wood ilo Carpet in Living Areas
- 4 LED Disc in Living Room
- 2nd Sink in Owner's Bath
- Garage Door Opener
- Stainless Steel Appliance Package
- Low Voltage Package (security system separate)
- Kitchen Island Extension



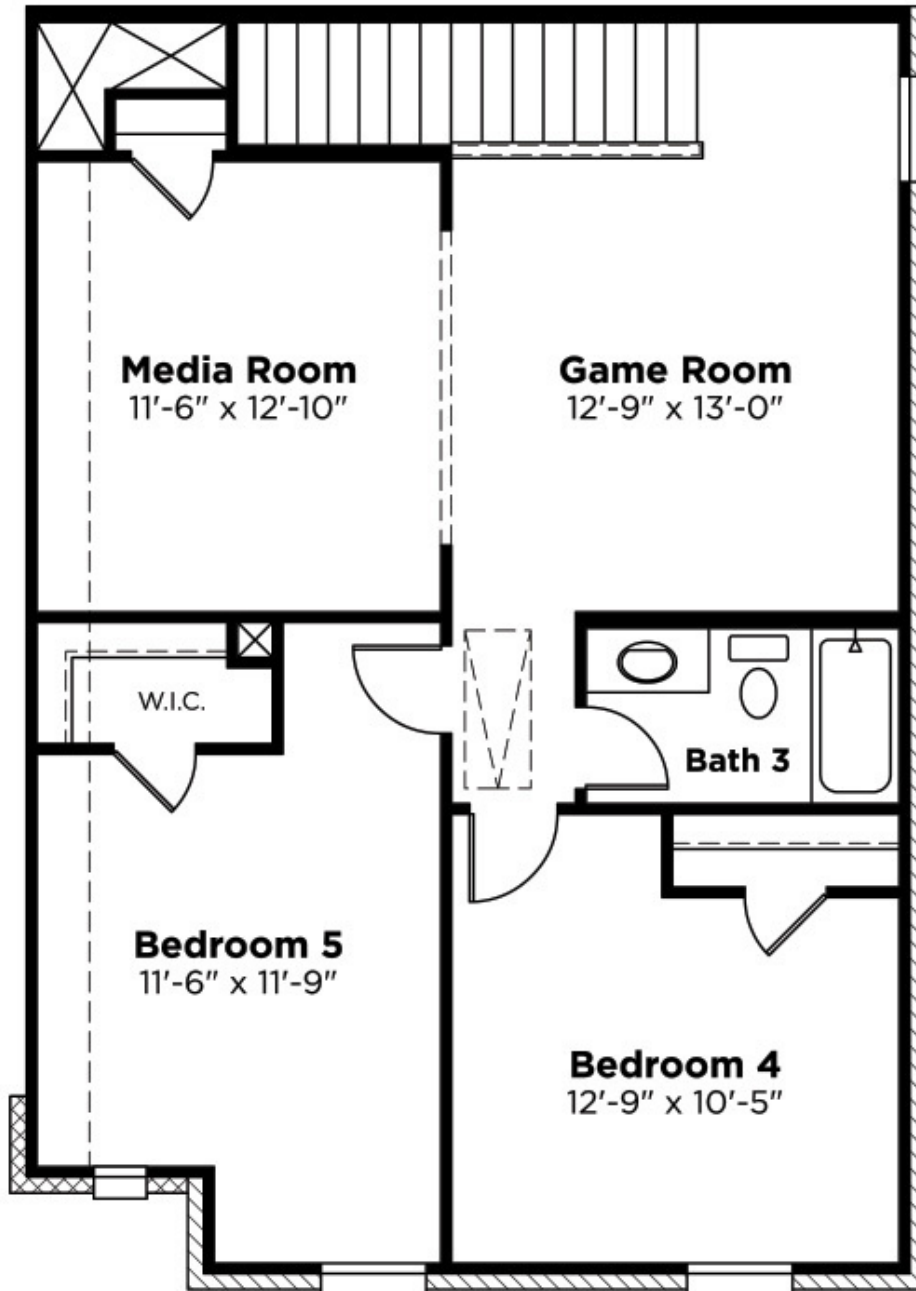
© 2024 CMG Financial, all rights reserved. CMG Financial is a registered trade name of CMG Mortgage Inc., NMLS #1820 in most, but not all states. CMG Mortgage, Inc. is an equal opportunity lender. Registered Mortgage Banker with the Texas Department of Savings and Mortgage Lending. To verify our complete list of state licenses, please visit www.cmgfi.com/corporate/licensing and www.nmlsconsumeraccess.org. All loans subject to credit approval and only eligible with CMG Financial, Cambridge Homes Preferred Lender. This incentive only valid on select spec homes that are contracted on or after 2/23/24 and close during the limited time frame in which the incentive is offered, while funds last, and finance with CMG Financial. The rates shown above are for educational purposes only, not a commitment to lend, please contact LO to see your qualified rate. Rate may change or may not be available at time of rate lock. If the down payment is less than 20%, mortgage insurance may be required, which could increase the monthly payment and the APR. Estimated monthly payment does not include amounts for taxes and insurance premiums. Adjustable-rate loans and rates are subject to change during the loan term. That change can increase or decrease your monthly payment. The rates shown above are the current rates for the purchase of a single-family primary residence based on a 45 day lock period, 740 credit score and 80% LTV. These rates are not guaranteed and are subject to change. This is not a credit decision or a commitment to lend. Your rate will depend on various factors including loan product, loan size, credit profile, property value, geographic location, occupancy and other factors. Offer is for a limited time only and can be stopped at any time and with no prior notice.

*Rate as of 2/22/24, 10/6 ARM. Stated rate may change or may not be available at time of rate lock. Purchase Price \$400,000, 20% Down Payment, \$320,000 Loan Amount, 30 year term, initial interest rate 4.99% (6.228% APR) for initial 120 payments of \$1,716, not including mortgage insurance/taxes/insurance.

Post Introductory Period Example: Interest Rate = SOFR + Margin. Payment can adjust every 6 months. Sample Repayments at month 120 with balance of \$260,216: 3% Margin, 5.32% SOFR (2/22/24), 8.375% variable rate, \$2,238 monthly payment. At max interest rate of 9.99% payment is \$2,509.



UPPER FLOOR



© 2024 CMG Financial, all rights reserved. CMG Financial is a registered trade name of CMG Mortgage Inc., NMLS #1820 in most, but not all states. CMG Mortgage, Inc. is an equal opportunity lender. Registered Mortgage Banker with the Texas Department of Savings and Mortgage Lending. To verify our complete list of state licenses, please visit www.cmgfi.com/corporate/licensing and www.nmlsconsumeraccess.org. All loans subject to credit approval and only eligible with CMG Financial, Cambridge Homes Preferred Lender. This incentive only valid on select spec homes that are contracted on or after 2/23/24 and close during the limited time frame in which the incentive is offered, while funds last, and finance with CMG Financial. The rates shown above are for educational purposes only, not a commitment to lend, please contact LO to see your qualified rate. Rate may change or may not be available at time of rate lock. If the down payment is less than 20%, mortgage insurance may be required, which could increase the monthly payment and the APR. Estimated monthly payment does not include amounts for taxes and insurance premiums. Adjustable-rate loans and rates are subject to change during the loan term. That change can increase or decrease your monthly payment. The rates shown above are the current rates for the purchase of a single-family primary residence based on a 45 day lock period, 740 credit score and 80% LTV. These rates are not guaranteed and are subject to change. This is not a credit decision or a commitment to lend. Your rate will depend on various factors including loan product, loan size, credit profile, property value, geographic location, occupancy and other factors. Offer is for a limited time only and can be stopped at any time and with no prior notice.

*Rate as of 2/22/24. 10/6 ARM. Stated rate may change or may not be available at time of rate lock. Purchase Price \$400,000, 20% Down Payment, \$320,000 Loan Amount, 30 year term, initial interest rate 4.99% (6.228% APR) for initial 120 payments of \$1,716, not including mortgage insurance/taxes/insurance.
 Post Introductory Period Example: Interest Rate = SOFR + Margin. Payment can adjust every 6 months. Sample Repayments at month 120 with balance of \$260,216: 3% Margin, 5.32% SOFR (2/22/24), 8.375% variable rate, \$2,238 monthly payment. At max interest rate of 9.99% payment is \$2,509.

Cambridge Homes, 2600 Network Blvd Ste. 150, Frisco, Texas 75034. These depictions represent an artist's concept of the product and are not intended to be an exact representation and are not intended to show specific detailing. The company may change home design, price, materials, features and methods of construction without prior notice. Square footage are estimate only. Copyright © 2024 Cambridge Homes Holdings, LLC. All rights reserved.

PLAN EFFECTIVE DATE 4.14.23 - SALES EFFECTIVE DATE 2.26.24





© 2024 CMG Financial, all rights reserved. CMG Financial is a registered trade name of CMG Mortgage Inc., NMLS #1820 in most, but not all states. CMG Mortgage, Inc. is an equal opportunity lender. Registered Mortgage Banker with the Texas Department of Savings and Mortgage Lending. To verify our complete list of state licenses, please visit www.cmgfi.com/corporate/licensing and www.nmlsconsumeraccess.org. All loans subject to credit approval and only eligible with CMG Financial, Cambridge Homes Preferred Lender. This incentive only valid on select spec homes that are contracted on or after 2/23/24 and close during the limited time frame in which the incentive is offered, while funds last, and finance with CMG Financial. The rates shown above are for educational purposes only, not a commitment to lend, please contact LO to see your qualified rate. Rate may change or may not be available at time of rate lock. If the down payment is less than 20%, mortgage insurance may be required, which could increase the monthly payment and the APR. Estimated monthly payment does not include amounts for taxes and insurance premiums. Adjustable-rate loans and rates are subject to change during the loan term. That change can increase or decrease your monthly payment. The rates shown above are the current rates for the purchase of a single-family primary residence based on a 45 day lock period, 740 credit score and 80% LTV. These rates are not guaranteed and are subject to change. This is not a credit decision or a commitment to lend. Your rate will depend on various factors including loan product, loan size, credit profile, property value, geographic location, occupancy and other factors. Offer is for a limited time only and can be stopped at any time and with no prior notice.

*Rate as of 2/22/24. 10/6 ARM. Stated rate may change or may not be available at time of rate lock. Purchase Price \$400,000, 20% Down Payment, \$320,000 Loan Amount, 30 year term, initial interest rate 4.99% (6.228% APR) for initial 120 payments of \$1,716, not including mortgage insurance/taxes/insurance.
Post Introductory Period Example: Interest Rate = SOFR + Margin. Payment can adjust every 6 months. Sample Repayments at month 120 with balance of \$260,216: 3% Margin, 5.32% SOFR (2/22/24), 8.375% variable rate, \$2,238 monthly payment. At max interest rate of 9.99% payment is \$2,509.

Cambridge Homes, 2600 Network Blvd Ste. 150, Frisco, Texas 75034. These depictions represent an artist's concept of the product and are not intended to be an exact representation and are not intended to show specific detailing. The company may change home design, price, materials, features and methods of construction without prior notice. Square footage are estimate only. Copyright © 2024 Cambridge Homes Holdings, LLC. All rights reserved.

PLAN EFFECTIVE DATE 4.14.23 - SALES EFFECTIVE DATE 2.26.24

