

1504 FOXFLOVE PARK

Van Alstyne, TX - Tinsley Meadows
GRIER - F



\$379,475

ABOUT THE TOWN

If you are looking to get out of the city into a town with a true community feel and top rated school district, this is the community for you. Sitting a short 15 minutes out of Mckinney, TX, you are still able to enjoy all of the recreation that Mckinney has to offer.

PROPERTY FEATURES

- Dining Room
- 4 Bedrooms
- 2 Bathrooms
- Kitchen Island Extension
- 2-Car Garage
- 2000 Sq. Ft.

CONTACT US

tinsleymeadows@cambridgehomes.com

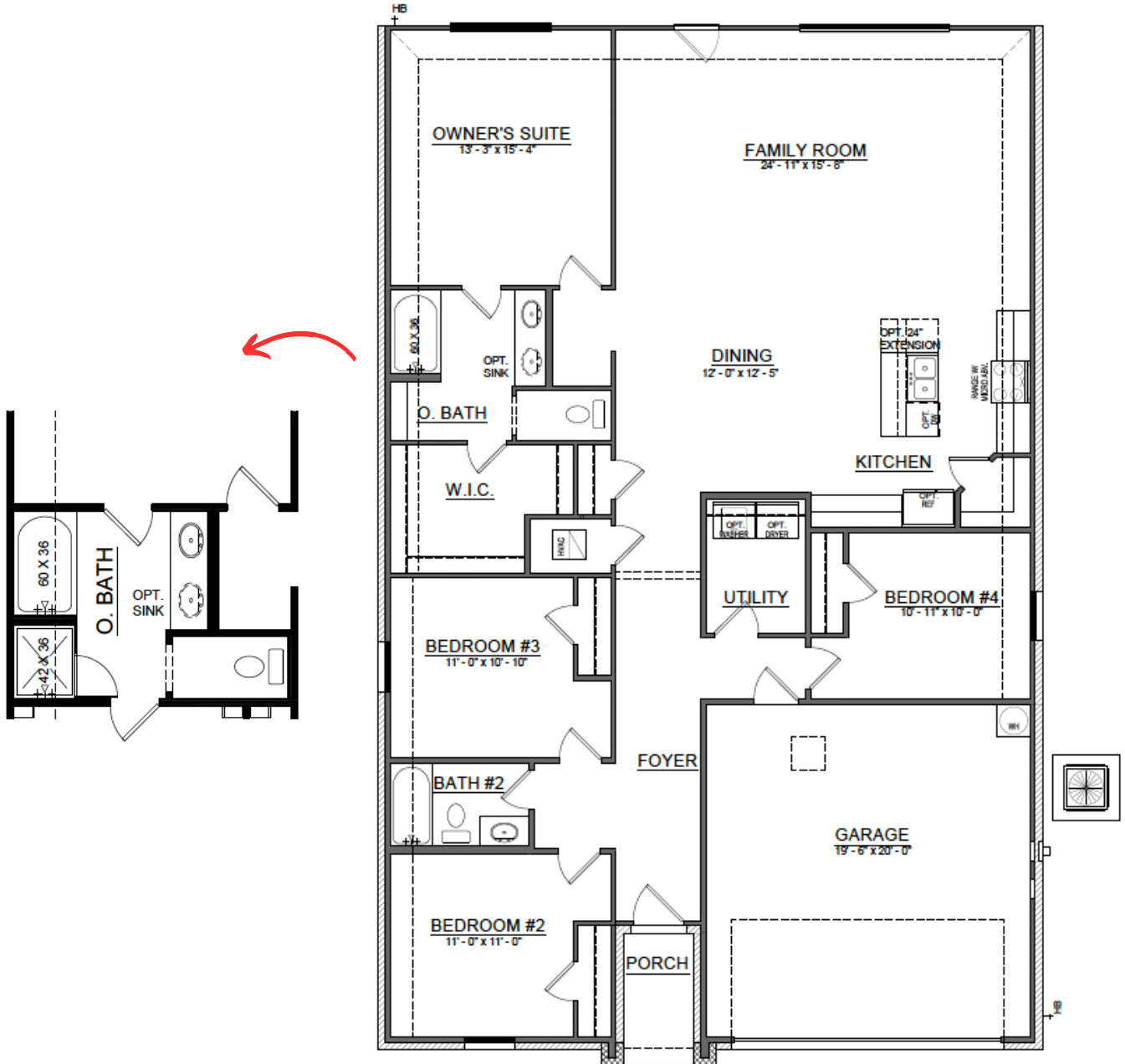
469-782-9190

MODEL HOME: 722 Tinsley Meadows Dr. Van Alstyne, TX 75495

BY APPOINTMENT ONLY.



FLOOR PLAN



Cambridge Homes. 2600 Network Blvd Ste. 150, Frisco, Texas 75034. These depictions represent an artist's concept of the product and are not intended to be an exact representation and are not intended to show specific detailing. The company may change home design, price, materials, features and methods of construction without prior notice. Square footage are estimate only. Copyright © 2023 Cambridge Homes Holdings, LLC. All rights reserved.

PLAN EFFECTIVE DATE: 6.5.23 | SALES EFFECTIVE DATE: 7.28.2023

